

Radio - Premium Sound System

from November 2004

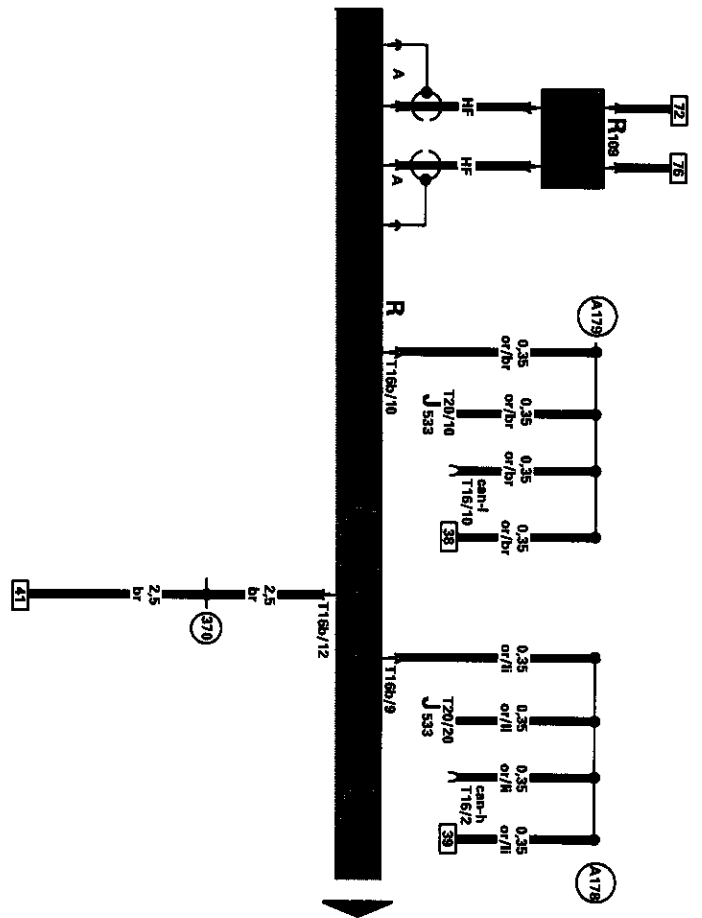
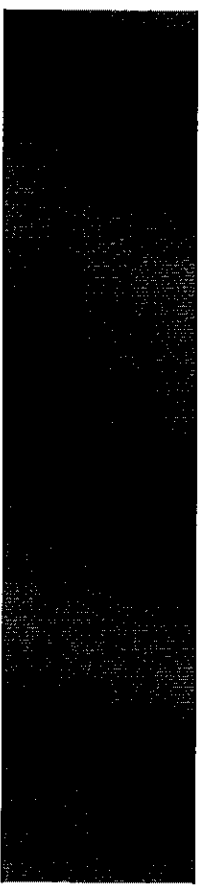
Notes:

Information for

- ◆ *Relay and Fuse arrangements*
 - ◆ *Connector arrangements*
 - ◆ *Control Modules and Relays*
 - ◆ *Ground Connections*
- ⇒ *Component Locations*

Information for

- ◆ *Troubleshooting procedures*
- ⇒ *Guided Fault Finding using VAS 5051/5052*

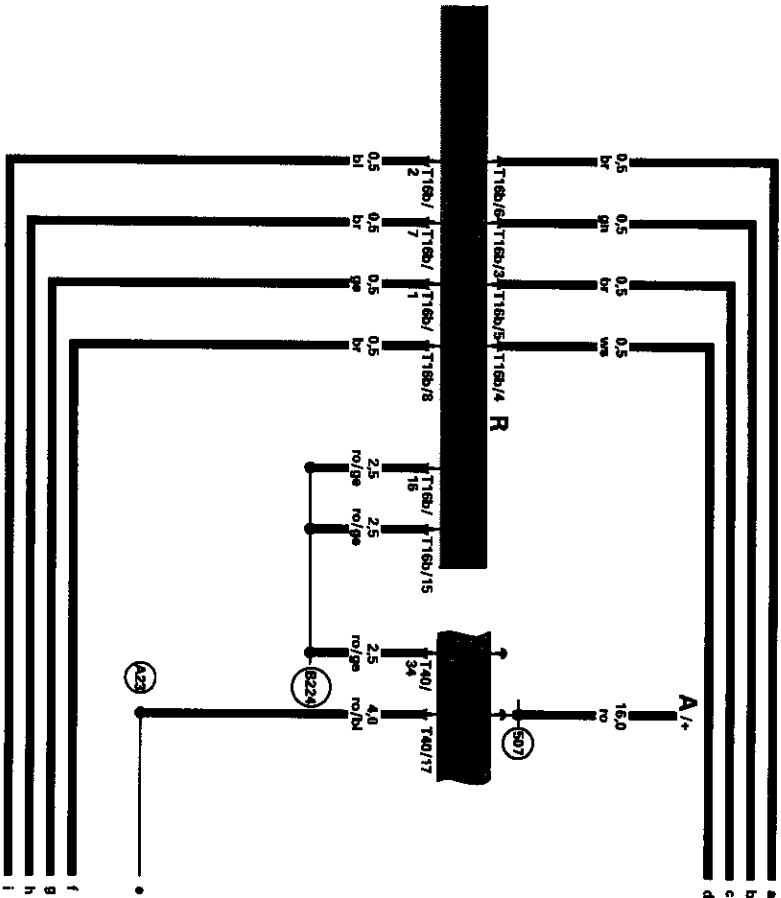
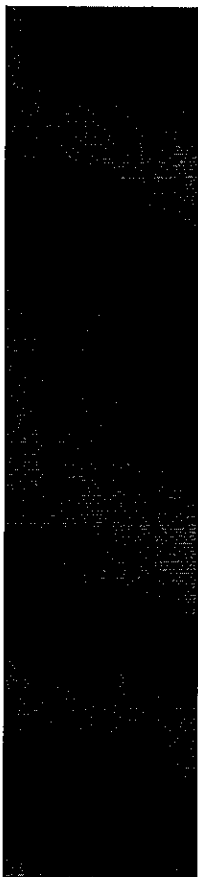


Radio, Antenna

- J519 - Vehicle Electrical System Control Module
- J533 - Data Bus On Board Diagnostic Interface
- R - Radio
- R109 - Right Antenna Module
- T16 - 16-pin connector, Data Link Connector (DLC), below steering column, left
- T16b - 16-Pin Connector
- T20 - 20-Pin Connector
- (370) - Ground Connection 5 (in main wiring harness)
- (A178) - Infotainment High-Bus Connection (in instrument panel wiring harness)
- (A179) - Infotainment Lo-bus Connection (in instrument panel wiring harness)

- ws = white
- sw = black
- ro = red
- br = brown
- gn = green
- bl = blue
- gr = grey
- ll = violet
- ge = yellow
- or = orange

1	2	3	4	5	6	7	8	9	10	11	12	13	14
													97-53600



Radio

- A - Battery
- J519 - Vehicle Electrical System Control Module
- R - Radio
- SB18 - Fuse 18 (in fuse panel)
- SB19 - Fuse 19 (in fuse panel)
- T16b - 16-Pin Connector
- T40 - 40-Pin Connector
- (507) - Threaded Connection (30) (on relay holder/battery)
- (A23) - Connection (30A), in instrument panel wiring harness
- (B224) - Connection 1 (Radio) (interior wiring harness)

- ws = white
- sw = black
- fo = red
- br = brown
- gn = green
- bl = blue
- gr = grey
- il = violet
- ge = yellow
- of = orange

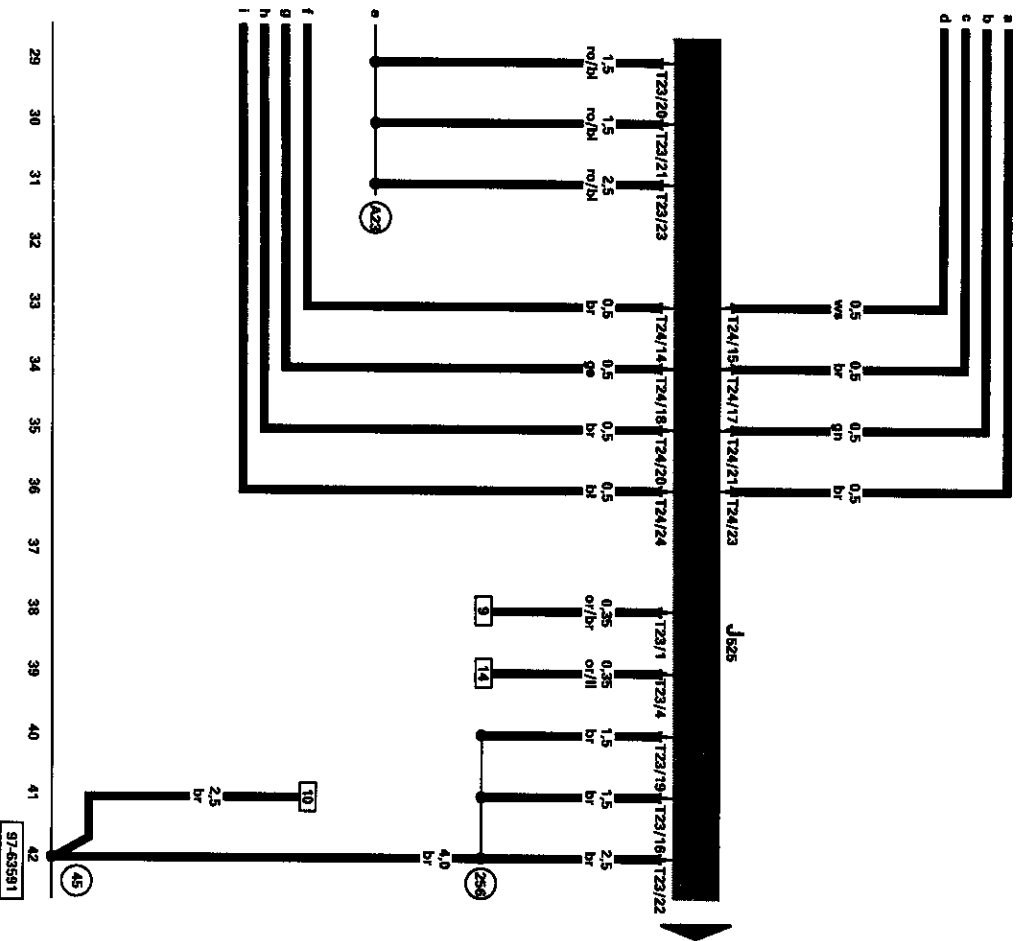
15 16 17 18 19 20 21 22 23 24 25 26 27 28

97-63801

Digital Sound System Control Module

- J519 - Vehicle Electrical System Control Module
- J525 - Digital Sound System Control Module
- T23 - 23-Pin Connector
- T24 - 24-Pin Connector

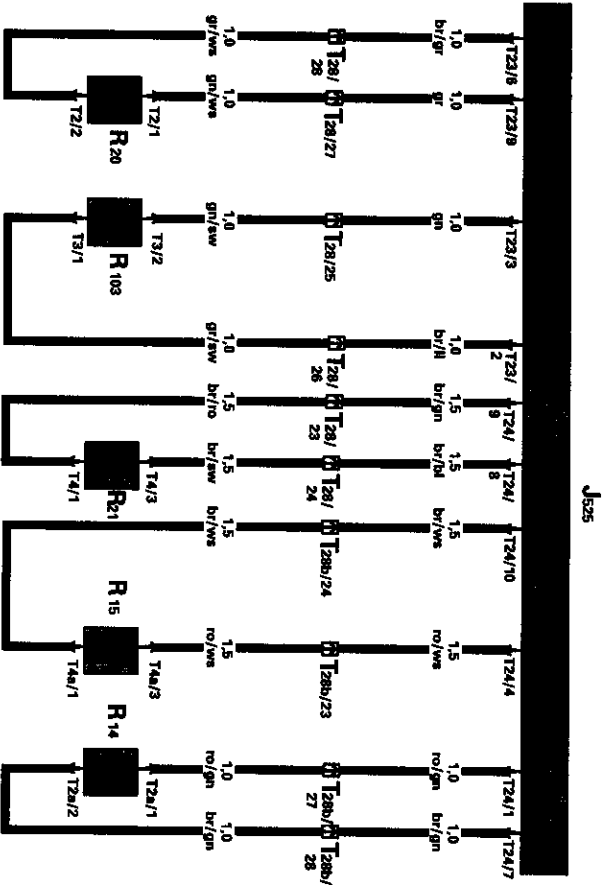
- 45 - Ground connection, behind instrument panel, center
- 256 - Ground connection, -2-, in wiring harness radio
- A23 - Wire connection (30a), in instrument panel wiring harness



ws = white
 sw = black
 to = red
 br = brown
 gn = green
 bl = blue
 gr = grey
 li = violet
 ge = yellow
 or = orange

Digital Sound System Control Module, Left Rear Treble Speaker, Left Rear Bass Speaker, Left Front Treble Speaker, Left Front Bass Speaker, Left Front Midrange Speaker

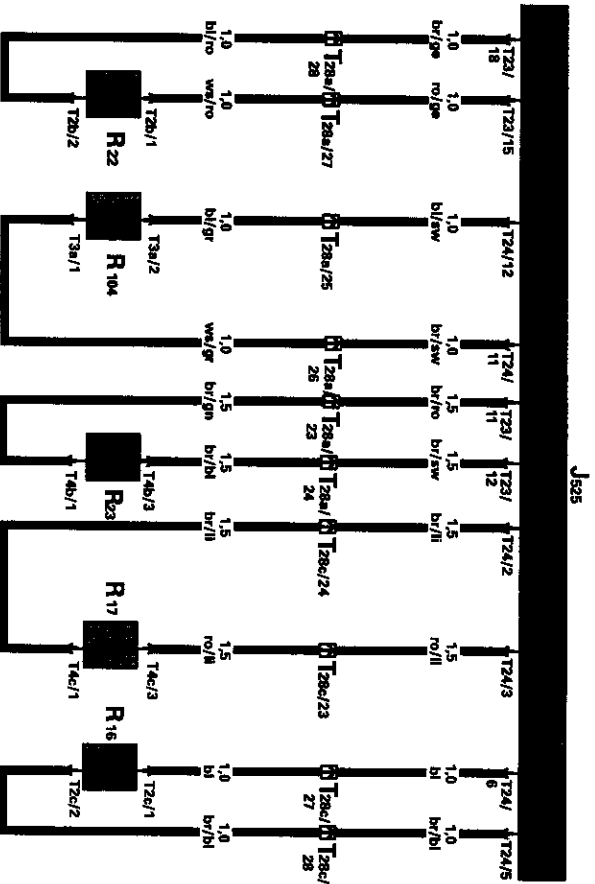
- J519 - Vehicle Electrical System Control Module
- J525 - Digital Sound System Control Module
- R14 - Left Rear Treble Speaker
- R15 - Left Rear Bass Speaker
- R20 - Left Front Treble Speaker
- R21 - Left Front Bass Speaker
- R103 - Left Front Midrange Speaker
- T2 - Double Connector
- T2a - Double Connector
- T3 - 3-Pin Connector
- T4 - 4-Pin Connector
- T4a - 4-Pin Connector
- T23 - 23-Pin Connector
- T24 - 24-Pin Connector
- T28 - 28-Pin Connector
- T28b - 28-Pin Connector



ws = white
 sw = black
 ro = red
 br = brown
 gn = green
 bl = blue
 gr = grey
 ll = violet
 ge = yellow
 or = orange

**Digital Sound System Control Module, Right Rear
Trebble Speaker, Right Rear Bass Speaker, Right
Front Treble Speaker, Right Front Bass Speaker,
Right Front Midrange Speaker**

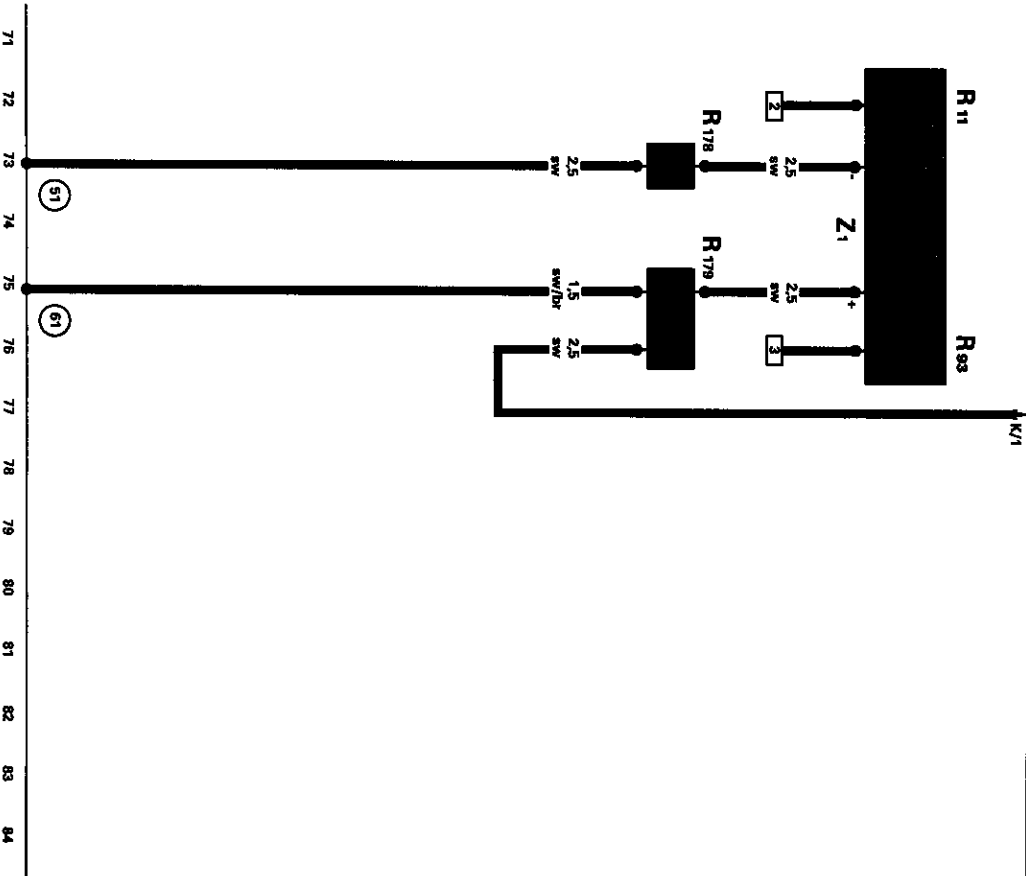
- J519 - Vehicle Electrical System Control Module
- J525 - Digital Sound System Control Module
- R16 - Right Rear Treble Speaker
- R17 - Right Rear Bass Speaker
- R22 - Right Front Treble Speaker
- R23 - Right Front Bass Speaker
- R104 - Right Front Midrange Speaker
- T2b - Double Connector
- T2c - Double Connector
- T3a - 3-Pin Connector
- T4b - 4-Pin Connector
- T4c - 4-Pin Connector
- T23 - 23-Pin Connector
- T24 - 24-Pin Connector
- T28a - 28-Pin Connector
- T28c - 28-Pin Connector



ws = white
 sw = black
 ro = red
 br = brown
 gn = green
 bl = blue
 gr = grey
 vl = violet
 ge = yellow
 or = orange

57 58 59 60 61 62 63 64 65 66 67 68 69 70

97-63583



Rear Window Defogger Relay, Vehicle Electrical System Control Module, Antenna, Radio Antenna 2, FM Frequency Filter (in negative wire), FM Frequency Filter (in positive wire), Heated rear window

- J9 - Rear Window Defogger Relay
- J519 - Vehicle Electrical System Control Module
- R11 - Antenna
- R93 - Radio Antenna 2
- R178 - FM Frequency Filter (in negative wire)
- R179 - FM Frequency Filter (in positive wire)
- Z1 - Heated rear window
- 51 - Ground Connection, in luggage compartment, right
- 61 - Ground Connection (on left C-pillar)

ws = white
 sw = black
 ro = red
 br = brown
 gn = green
 bl = blue
 gr = grey
 ll = violet
 ge = yellow
 or = orange

97-63775