

Radio - Navigation System,

from November 2004

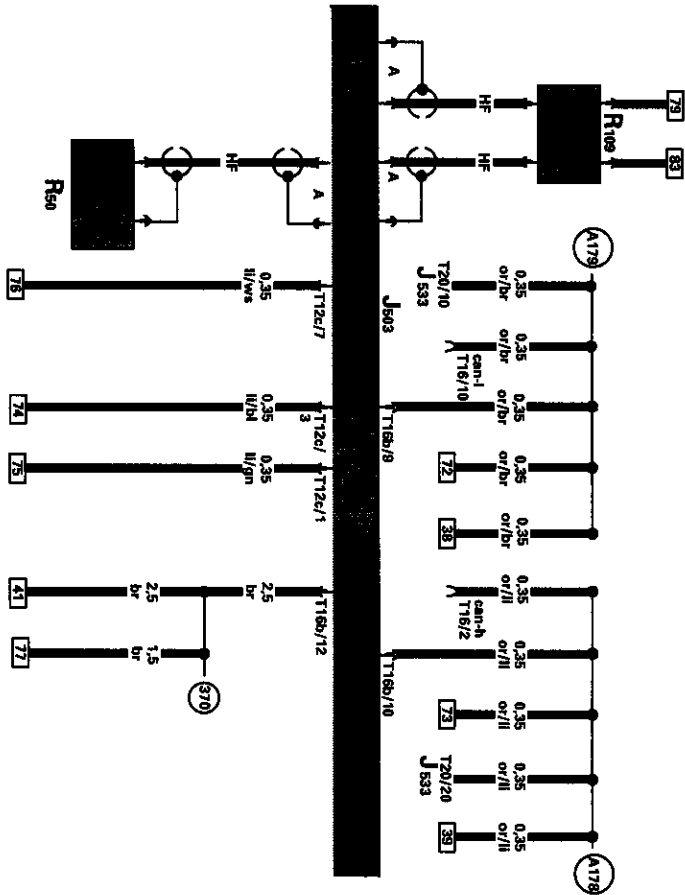
Notes:

Information for

- ◆ Relay and Fuse arrangements
 - ◆ Connector arrangements
 - ◆ Control Modules and Relays
 - ◆ Ground Connections
- ⇒ Component Locations

Information for

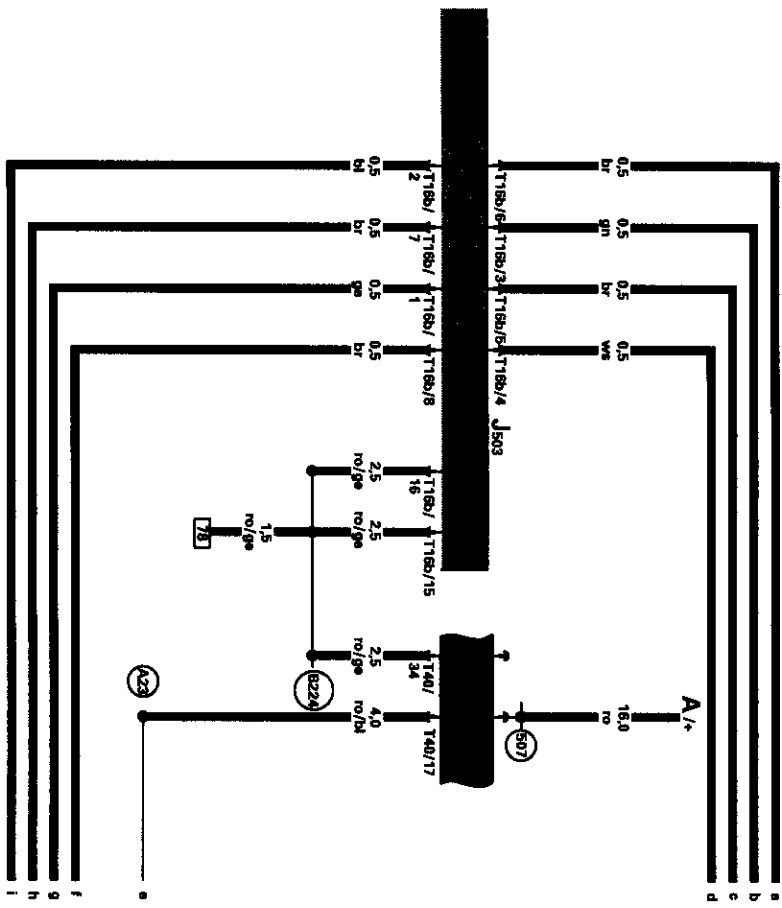
- ◆ Troubleshooting procedures
- ⇒ Guided Fault Finding using VAS 5051/5052



Radio/Navigation Display Control Module, Antenna, Antenna for Navigation System

- J503 - Radio/Navigation Display Control Module
- J519 - Vehicle Electrical System Control Module
- J533 - Data Bus On Board Diagnostic Interface
- R109 - Right Antenna Module
- R50 - Antenna for Navigation System
- T12c - 12-Pin Connector
- T16 - 16-pin connector, Data Link Connector (DLC), below steering column, left
- T16b - 16-Pin Connector
- T20 - 20-Pin Connector
- (370) - Ground Connection 5 (in main wiring harness)
- (A178) - Infotainment High-Bus Connection (in instrument panel wiring harness)
- (A179) - Infotainment Lo-bus Connection (in instrument panel wiring harness)

ws = white
 sw = black
 ro = red
 br = brown
 gn = green
 bl = blue
 gr = grey
 ll = violet
 ge = yellow
 or = orange



15 16 17 18 19 20 21 22 23 24 25 26 27 28

97-63803

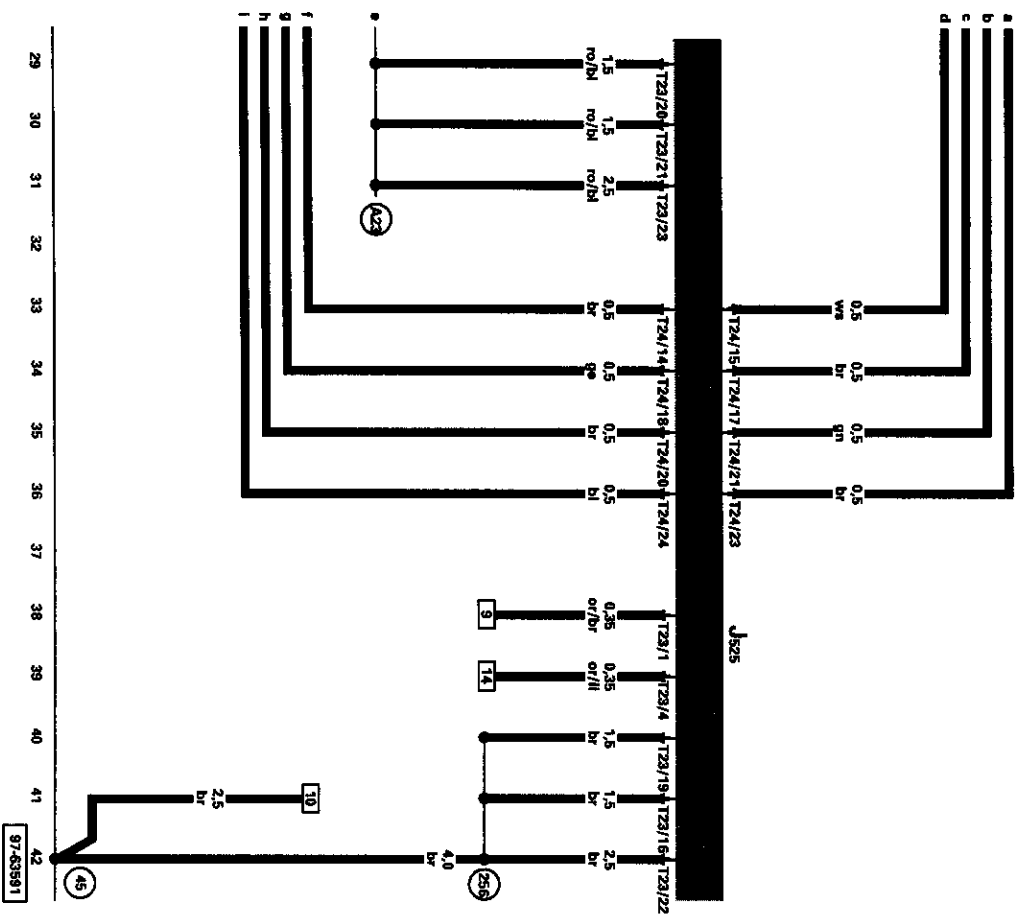
Radio/Navigation Display Control Module

- A - Battery
- J503 - Radio/Navigation Display Control Module
- J519 - Vehicle Electrical System Control Module
- SB18 - Fuse 18 (in fuse panel)
- SB19 - Fuse 19 (in fuse panel)
- T16b - 16-Pin Connector
- T40 - 40-Pin Connector
- 507 - Threaded Connection (30) (on relay holder/battery)
- A23 - Connection (30all), in instrument panel wiring harness
- B224 - Connection 1 (Radio) (interior wiring harness)

Digital Sound System Control Module

- J519 - Vehicle Electrical System Control Module
- J525 - Digital Sound System Control Module
- T23 - 23-Pin Connector
- T24 - 24-Pin Connector

- 45 - Ground connection, behind instrument panel, center
- 256 - Ground connection, -2-, in wiring harness radio
- A23 - Wire connection (30a), in instrument panel wiring harness



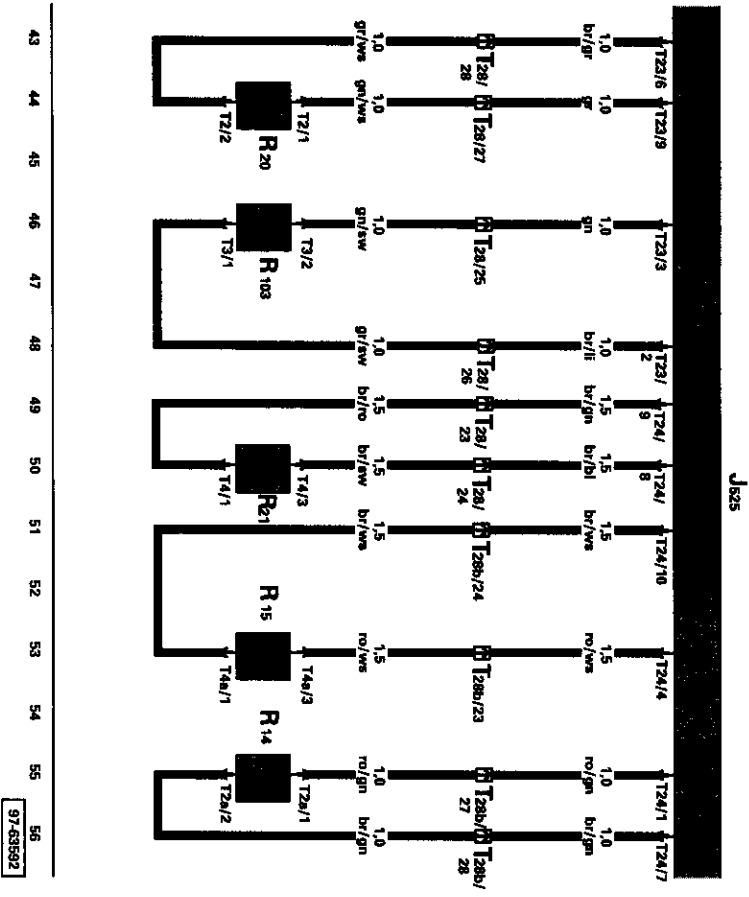
ws = white
 sw = black
 ro = red
 br = brown
 gn = green
 bl = blue
 gr = grey
 ll = violet
 ge = yellow
 or = orange

29 30 31 32 33 34 35 36 37 38 39 40 41 42

97-639581

Digital Sound System Control Module, Left Rear Treble Speaker, Left Rear Bass Speaker, Left Front Treble Speaker, Left Front Bass Speaker, Left Front Midrange Speaker

- J519 - Vehicle Electrical System Control Module
- J525 - Digital Sound System Control Module
- R12 - Amplifier
- R14 - Left Rear Treble Speaker
- R15 - Left Rear Bass Speaker
- R20 - Left Front Treble Speaker
- R21 - Left Front Bass Speaker
- R103 - Left Front Midrange Speaker
- T2 - Double Connector
- T2a - Double Connector
- T3 - 3-Pin Connector
- T4 - 4-Pin Connector
- T4a - 4-Pin Connector
- T23 - 23-Pin Connector
- T24 - 24-Pin Connector
- T28 - 28-Pin Connector
- T28b - 28-Pin Connector



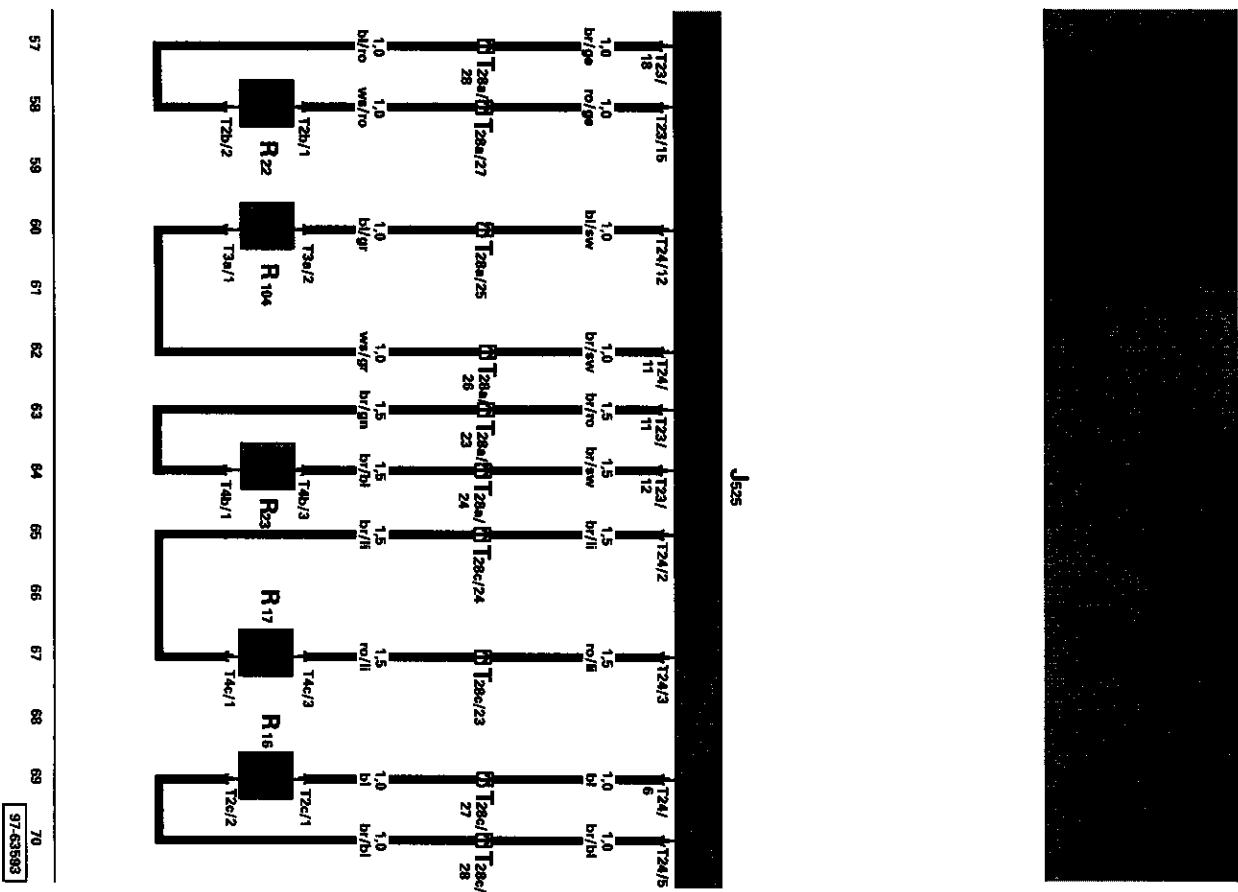
ws = white
 sw = black
 ro = red
 br = brown
 gn = green
 bl = blue
 gr = grey
 ll = violet
 ge = yellow
 or = orange

43 44 45 46 47 48 49 50 51 52 53 54 55 56

97-63592

**Digital Sound System Control Module, Right Rear
Treble Speaker, Right Rear Bass Speaker, Right
Front Treble Speaker, Right Front Bass Speaker,
Right Front Midrange Speaker**

- J519 - Vehicle Electrical System Control Module
- J525 - Digital Sound System Control Module
- R16 - Right Rear Treble Speaker
- R17 - Right Rear Bass Speaker
- R22 - Right Front Treble Speaker
- R23 - Right Front Bass Speaker
- R104 - Right Front Midrange Speaker
- T2b - Double Connector
- T2c - Double Connector
- T3a - 3-Pin Connector
- T4b - 4-Pin Connector
- T4c - 4-Pin Connector
- T23 - 23-Pin Connector
- T24 - 24-Pin Connector
- T28a - 28-Pin Connector
- T28c - 28-Pin Connector

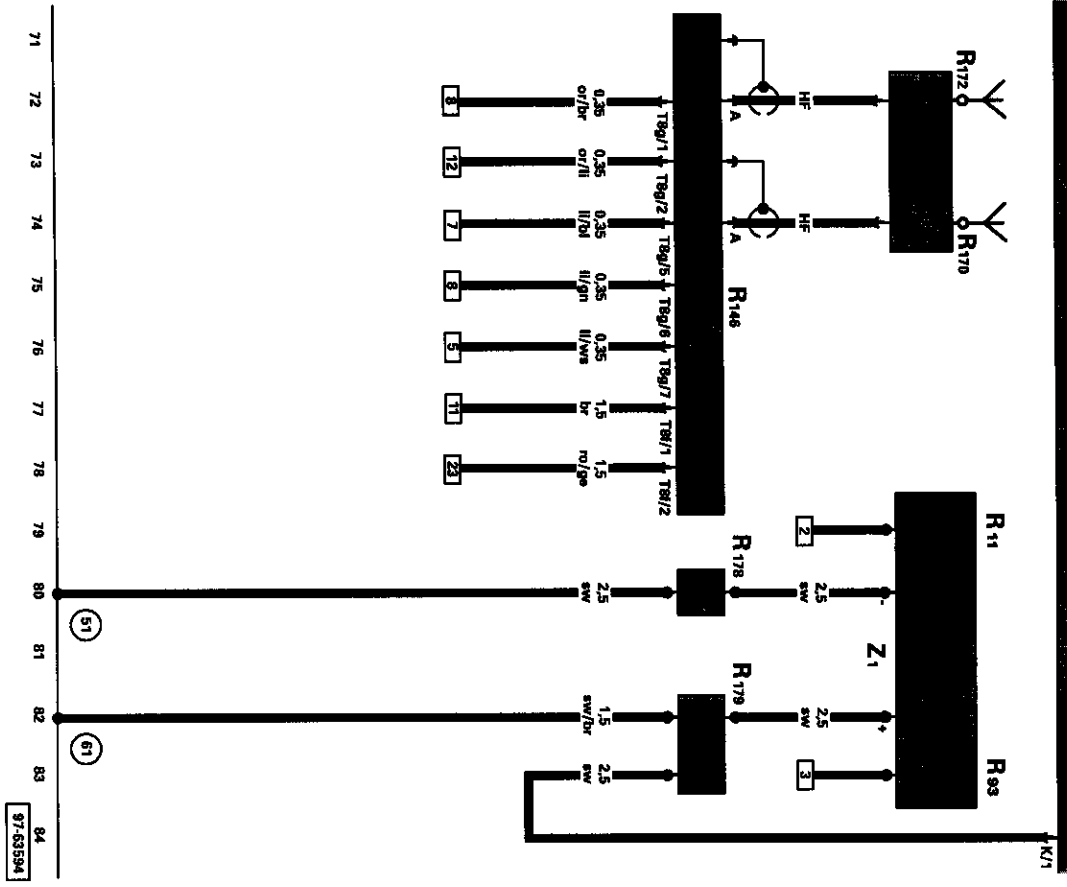


ws = white
 sw = black
 ro = red
 br = brown
 gn = green
 bl = blue
 gr = grey
 li = violet
 ge = yellow
 or = orange

97-63683

Rear Window Defogger Relay, Vehicle Electrical System Control Module, Satellite Radio, Satellite Antenna, Satellite Tuner Antenna, FM Frequency Filter (in negative wire), FM Frequency Filter (in positive wire), Heated rear window

- J9 - Rear Window Defogger Relay
- J519 - Vehicle Electrical System Control Module
- R11 - Antenna
- R93 - Radio Antenna 2
- R146 - Satellite Radio
- R170 - Satellite Antenna
- R172 - Satellite Tuner Antenna
- R178 - FM Frequency Filter (in negative wire)
- R179 - FM Frequency Filter (in positive wire)
- T8f - 8-Pin Connector on R146
- T8g - 8-Pin Connector on R146
- Z1 - Heated Rear Window



ws = white
 sw = black
 ro = red
 br = brown
 gn = green
 bl = blue
 gr = grey
 vl = violet
 ge = yellow
 or = orange